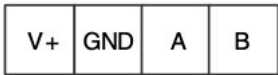
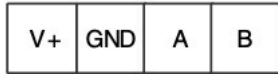
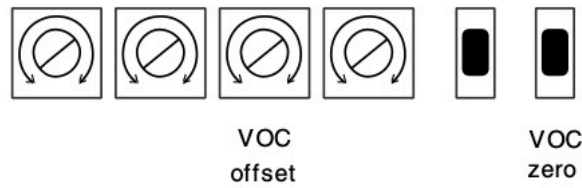


Wiring diagram:
see ss_1433 in the
installation and
operating
instructions for
your unit.



MODE

ADDRESS



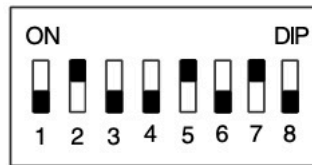
Maximum total of 6 KWL-CO2 eC + KWL-VOC eC possible. Please observe wiring diagram ss_1433.

**Modbus address range VOC / CO2
70 - 75**

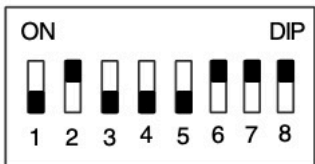
Each address may only be used once



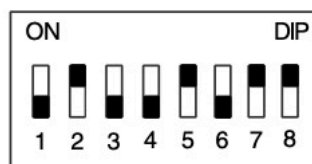
Default setting:
Corresponds to 70



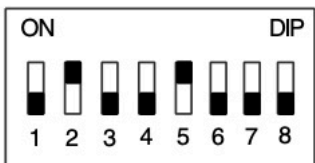
Corresponds to 74



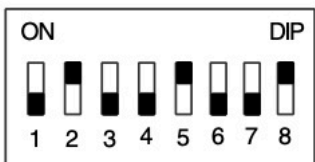
Corresponds to 71



Corresponds to 75



Corresponds to 72



Corresponds to 73



Mode: Do not change
internal setting